

The "Ally Mo" News



www.apasanantonio.com

1st Quarter

April 2011

Quarterly Quotes



Always bear in mind that your own resolution to succeed is more important than any other one thing.

- Abraham Lincoln

What lies behind us and what lies before us are tiny matters compared to what lies within us.

-Ralph Waldo Emerson

Decide that you want it more than you are afraid of it.

-Confucius

Trust men and they will be true to you; treat them greatly and they will show themselves great.

- Ralph Waldo Emerson

If you have a quote you would like to share, please e-mail us at gov_liaison@apasanantonio.com

Alamo Chapter Calendar – Monthly Luncheon

MAY 19, 2011

Patsy Foxworth: The Foxworth Group

Topic: Time & Communication – Making it Happen

JUNE 16, 2011

To Be Determined

JULY 21, 2011

To Be Determined

2011 Alamo Chapter Sponsors

Alamo Sponsor



Riverwalk Sponsor



Armadillo Sponsor



INSIDE THIS ISSUE

1	Quarterly Quotes/ Calendar/Sponsors
2	New Members / FPC/CPP Preparation Class
3	APA Congress / IRS Update
4	Karen's Wonder-full World
5/6	AC APA Puzzle

1st Quarter 2011 New Members

Please join us in welcoming the following new members to the Alamo Chapter,

January

Jennifor Cordes
University of the Incarnate Word

Michelle Turney
University of the Incarnate Word

Barbara Taylor
University of the Incarnate Word

Isabel Flores
Broadway Bank

Kevin Sugrue
Deacon Recruiting

February

Stephanie Stutes
Robert Half Finance & Accounting

Christine Scheppler
HEB Grocery Company

March

DeAnsin Simmons
Law Offices of Aaron & Quirk

Elizabeth Ortiz
UTSA

Christine Bodily
UTSA

Jeanie Curran
ISS Facility Services, Inc

We look forward to seeing you at our next meeting!

2011 FPC/ CPP Preparation Class

The Alamo Chapter is starting its 2011 FPC/ CPP Preparation Class beginning June 2nd. The class will meet every Thursday through August 24th, 2011, just 13 short weeks, from 6pm to 8pm. After that, if you choose, you will be able to attend an additional four weeks of review.

The class will be held at:

Carneiro, Chumney & Company
40 NE Loop 410, Suite 235 (Intersection of Loop 410 & McCullough across from North Star Mall)
San Antonio, TX 78216

Payments can be made online using PayPal or checks can be made payable to the Alamo Chapter APA and mailed to:

Alamo Chapter
American Payroll Association
P. O. Box 160612
San Antonio, Texas 78280-2812

For additional information, please logon to the www.apasanantonio.com website.

29th Annual American Payroll Association Congress!

(taken from the APA website)

Congress



Congress is the Premier Payroll Event of the Year!

APA's Annual Congress offers a wide variety of educational workshops, the world's largest payroll, accounts payable, and finance Expo, with over 100 exhibitors, and countless networking and motivational opportunities among 2,500 attendees. Congress 2011 is being held at the Salt Palace Convention Center in Salt Lake City, Utah, May 24-27, 2011.

What are you waiting for? Register today at www.americanpayroll.org/congress/

OR – if you are an APA National member, you can:

Join us for the 2011 Virtual Congress & Expo!

Get FREE access to:

- * 2011 Virtual Congress Expo
- * Earn up to 5 RCHs at 5 virtual workshops
- * Virtual Congress general session
- * Networking Lounge



IRS Issues Guidance on W-2 Reporting of Employer-Provided Health Coverage

The IRS has issued Notice 2011-28, interim guidance for employers on reporting the cost of the health insurance coverage they provide for employees on Form W-2. The notice includes information on how to report, what coverage to include and exclude, and how to determine the cost of the coverage.

The IRS emphasizes that this new reporting is for information purposes only, to inform employees of the cost of their health coverage, and does not cause excludable employer-provided health coverage to become taxable; employer-provided health coverage continues to be excludable from an employee's income, and is not taxable.

The Affordable Care Act requires employers to report the cost of employer-provided health care coverage on Form W-2. In Notice 2010-69, issued last fall, the IRS made this requirement optional for all employers for 2011 Forms W-2.

Now, in Notice 2011-28, the IRS provides further relief for smaller employers (those filing fewer than 250 W-2 forms) by making the reporting requirement optional for them at least for 2012 Forms W-2 furnished to employees in January 2013 and possibly beyond.

Using a question-and-answer format, Notice 2011-28 also provides guidance for employers that are subject to this requirement for 2012 Forms W-2 and those that choose to voluntarily comply with it for either 2011 or 2012.

[send this code (PUZZLE2011 to Karen.Brown@kci1.com by 05/18/11 to be entered into a contest for a special prize]

Karen's Wonder-full World!



Follow that Dream

Here awhile back I had a couple of dreams, both in the same night, which in their own very odd way came true the next day.

The first dream I flipped a fingernail off. Of course I was wearing the pretty nails that aren't mine. When it flipped off it took my whole nail with it. I don't remember any pain in the dream, but I kept looking at my hands trying to figure out which nail it was that came off. One would think that would be easy to tell. But we all know how dreams are.

The next day at work, I had just opened a file cabinet drawer and caught my pinky nail on the rack and flipped. Now, I did not flip the entire nail like the dream, but I broke it off back far enough that it bled and really hurt. Trust me, I knew exactly which nail it was, I didn't have to look at my hands to try to figure it out.

The other dream from that same night, I dreamt about a long lost friend. Janet and I used to craft together, run around with my daughter and did all kinds of things. Of course, we were both single at the time. My daughter just loved her and I'm pretty sure the feeling was mutual. Something happened along the way and we drifted apart. I can't remember exactly why or how, it just happened. It may be that she changed positions in the company we worked for in Oklahoma and made new friends. It may be because we both got married and went our separate ways from there. I don't really know. I just know this dream caused me to ache for her friendship.

The next day, during my lunch break, I started searching the internet. I won't go through all of the stuff I tried, but it came down to a lot of trial and error and trying to remember her maiden name. I drew a complete blank. Somehow or another I came across something that caught my eye and I followed it. Wow! She had her own website, and get this, she lives in Houston now. So close. I couldn't find an email address so I entered a short little "blob in her blog" about it having been a long time since M-D and that I looked forward to visiting with her and signed my name.

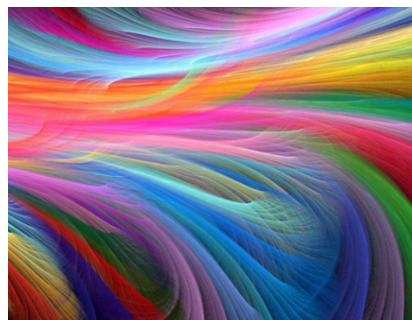
I immediately called my husband and told him to keep an eye on the email in case she answered, since my home email was the address I used in my "Blog blob" registration. He, of course, said he would. That evening when I got home, **I fired him!** I found an email from Janet from a little earlier that day that said, "No, way". She had been thinking about me lately too and was anxious to hear how I found her. Guess who forgot to check the email for me?

So it seems sometimes we have to make those dreams come true. Even the sore finger couldn't dampen my spirits when I saw her email that evening. We are still trying to catch up on the last 20 years. Let's put it this way, they haven't hurt her at all. From the pictures on her website, she is still tiny, petite and absolutely beautiful.

Do you have a lost friend or maybe someone in your family you were close to at one time and with whom you have lost touch? Take the valiant effort and try to find them. Pick up the phone, or write a letter. The internet is a great tool, but so are mutual friends, etc. I got lucky with her having a website, you might too. You'll never know till you try.

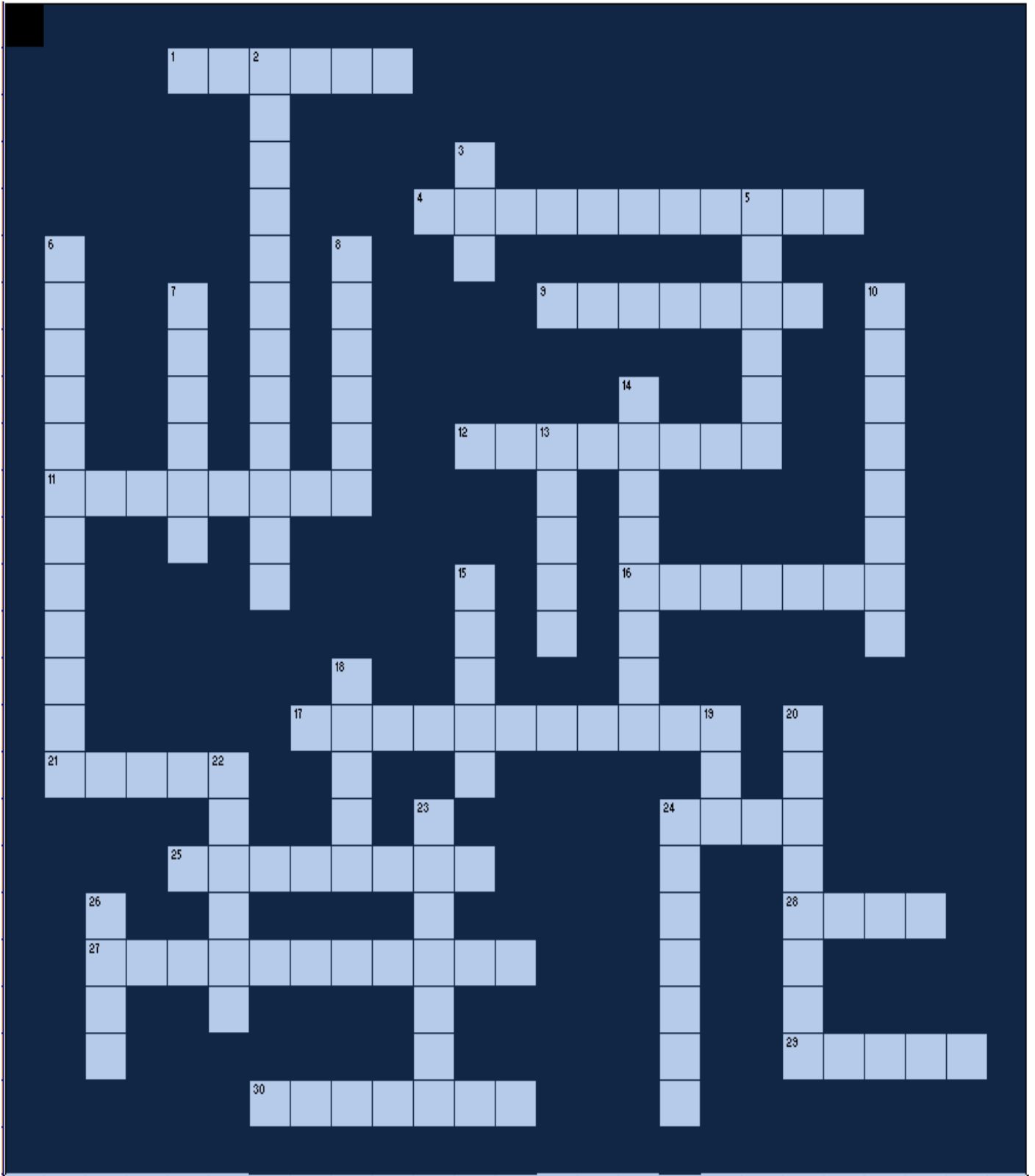
Remember, most importantly, don't let those good friends slip away, keep them close, and cherish them.

Just to share, I love rainbows and during a craft project for my newest grandchild that we are expecting, I came across this picture. It is my new favorite. I hope you like it too.



If you are looking for the clue for the drawing you are looking in the wrong place.

AC APA Puzzle



Across:

1. If a company's financial statements are prepared as of the last day of the calendar month and the hourly paid employees are paid weekly, it is likely the company will need to _____ wages expense and wages payable as of the last day of the calendar month.
4. A person paid in this manner will receive 24 paychecks per year
9. The additional 50% that employers pay when employees work more than 40 hours in one week is known as the overtime _____.
11. Hours in excess of 40 per week
12. A person paid in this manner will receive 26 paychecks per year.
16. Payroll withholdings are classified as _____ liabilities.
17. A court-ordered withholding from an employee's salary or wages.
21. Unemployment compensation is administered primarily by the _____ governments.
24. Health insurance benefits provided to retirees are part of _____-retirement benefits.
25. Withholdings from employees for a portion of the cost of health insurance will likely be _____ to health insurance expense.
27. A person providing services to a company who is not deemed to be an employee of the company is referred to as an _____ contractor.
28. Overtime hours are usually compensated at time and one _____.
29. _____ salary or wages is the amount an employee earns before deductions are made for payroll taxes and other items.
30. What to do to get your name in the drawing for a special gift - code "puzzle2011"

Down:

2. Worker _____ insurance covers work-related injuries.
3. The amount a person "clears" on their paycheck is the employee's _____ pay
5. _____-paid employees usually receive their paychecks approx. five days after the work period ends.
6. Deductions from employees' gross salaries and wages.
7. A term associated with the compensation earned by an executive or manager.
8. The tax withheld from employees and not matched by the employer is the federal _____ tax
10. In 2011 the Social _____ tax is withheld from employees at the rate of 4.2% on the first \$106,800.
13. A term associated with the compensation received by employees paid by the hour.
14. The payroll tax of 1.45% that is withheld from the employees' entire salary and/or wages and is also matched by the employer.
15. Employers withholding large amounts of federal income taxes and FICA taxes must _____ them to the government within a few days after payday.
18. The acronym for the official title of the Social Security system.
19. The employer must remit _____ times the amount required to be withheld from employees for Social Security and Medicare taxes.
20. Accruing vacation expense when it is earned by an employee instead of recording the expense when the vacation is taken is an application of the _____ principle.
22. A guaranteed bonus based on sales is best recorded as an expense and a liability when it is _____ by employees rather than when it is paid to the employees.
23. The _____ unemployment tax usually ends up to be 0.8% of each employee's first \$7000 of annual wages and/or salary.
24. If a company accrues vacation expense when it is earned by an employee, the account to be debited when the employee takes the vacation is Vacation _____.
26. This represents both Social Security and Medicare taxes. (acronym)